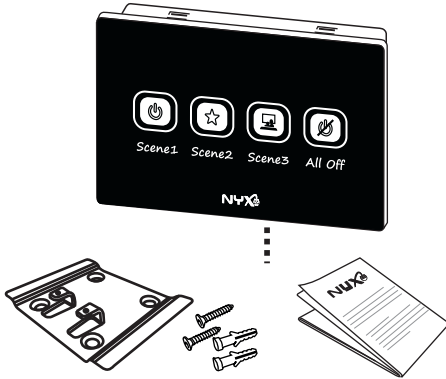




Installation Guide for 4 way RF keypad

Thank you for choosing Nyx 4 way RF keypad. This product is a wireless 4 way RF keypad that can be used to select the different lighting scenes.

The Box Contains- 4 way RF keypad
Mounting Plate
Rawl plugs and Screws
Installation guide



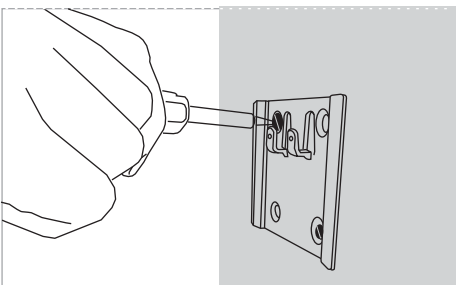
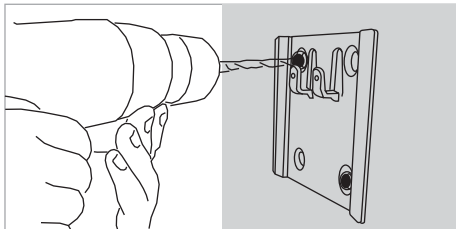
Technical Specifications

Operating voltage	230V, AC 50Hz
Standby Current	32 mA
Active Current	62 mA
Radio frequency	866Mhz
Radio operating distance	50m line of sight
Operating temperature	0°C to +50°C
Dimension (LXWXH)	107 X 70 X 25 mm

Product setup and configuration

1. The 4 way RF keypad is mounted on the mounting plate provided in the Box. This mounting plate should be installed as shown in fig.

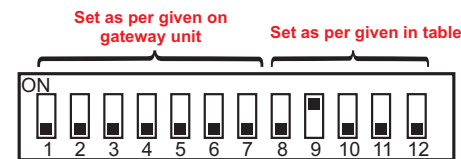
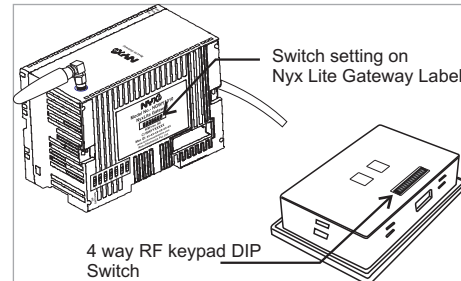
Note: Location of the device should be near to the power point.



Product setup and configuration

1. Set the DIP switches as per instructions below:

a) There are total 12 DIP switches. First 7 DIP switches should be set as per the settings shown on your NyxLite Gateway module.



b) The remaining 5 DIP switches (Switch 8 to 12) are meant for room location of the device. Choose the location and set the DIP switch setting as shown in below table:

DIP switch configuration:

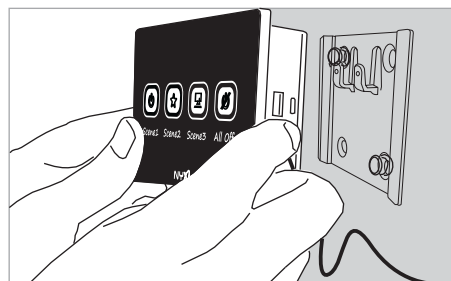
Four way RF Keypad

Room Location	Node ID (DIP switch 8 to 12)				
	8	9	10	11	12
Living	0	0	0	1	1
Master bedroom	1	0	0	1	1

How to set DIP switch to 1 or 0:

DIP Switch setting for position 0:	
DIP Switch setting for position 1:	

3. Mount the device on the mounting plate. Power on the Unit, by inserting cable in 230VAC, 50Hz socket.



4 way RF keypad Operations:



This product has 4 touch keys with defined light scenes. This device communicates with Gateway on RF. After installation when device is switch on for the first time only white back light will glow. When any scene key is pressed, it will light in BLUE color. If the scenes are already configured (using Nyx mobile application) the lighting will change accordingly. If the device is ideal for 10 Sec the back light will dim down.

- This mode can be configured through mobile app
- This mode can be configured through mobile app.
- This mode can be configured through mobile app.
- All lights will be turned off

Important Information

1. Locations to be avoided for installing 4 Way RF Keypad

- Places where water can splash on the unit
- Places where heavy dust accumulation occurs.

Troubleshooting

- 1) Unable to get desire scene on pressing the key:
 - a) Only BLUE light blinks for few seconds and Turn-OFF.
 - > Ensure DIP switches are set correctly.
 - > Check NyxLite Gateway is Turn-ON.
 - > Check the device is added in the Nyx mobile application.
- 2) Pressed scene key turns solid BLUE but no change in status.
 - > Ensure all scene keys are configured on mobile app.
- 3) Buzzer, flashing of BLUE LED does not occur when key is pressed.
 - > Check power cord is connected.
 - > Contact supplier.