

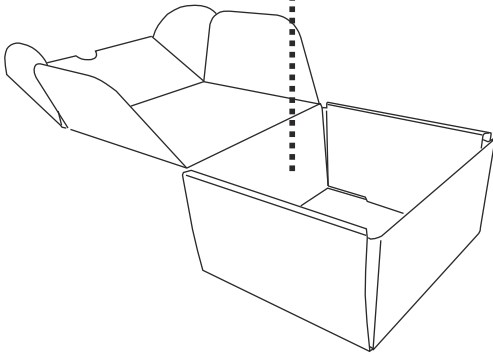
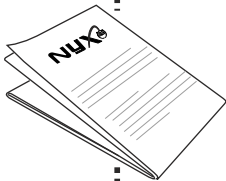
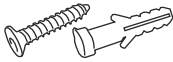
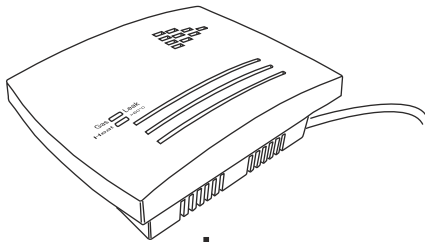


## Installation Guide for Gas Leak detector

Thank you for choosing Nyx Gas Leak Detector.

The product is a wireless Gas Leak detector that ensures the safety of your home by notifying LPG, PNG and CNG and natural gas leakage to the gateway unit.

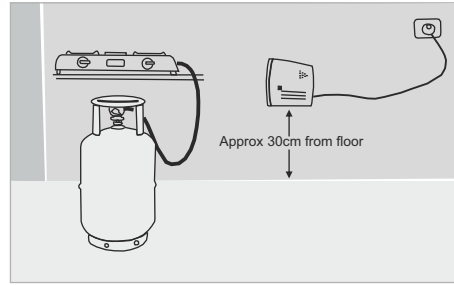
**The Box Contains-** Gas Leak Detector  
Rawl plugs and Screws  
Installation guide



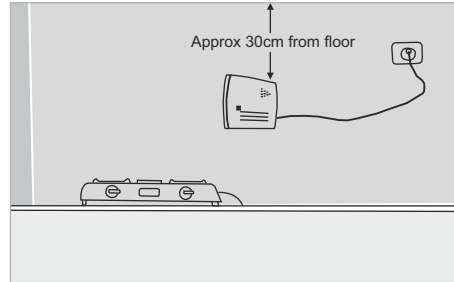
### Technical Specifications

Operating voltage	230V, AC 50Hz
Power consumption	About 0.5 W
LED indication	Gas: Red LED & Heat: Yellow LED
Detect indication	LED and local buzzer remains ON, and popup window along with buzzer on Gateway.
Radio frequency	868Mhz
Radio operating distance	50m line of sight
Operating temperature	0°C to +50°C
Dimension	(111 * 90 * 40)mm, (L * H * w)
Detection Level	10% LEL

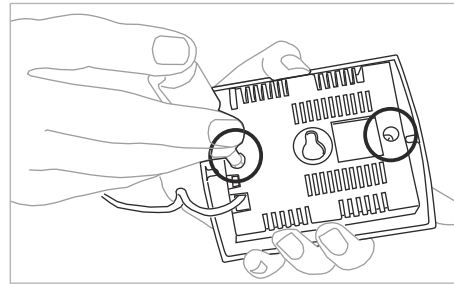
### Product setup and configuration



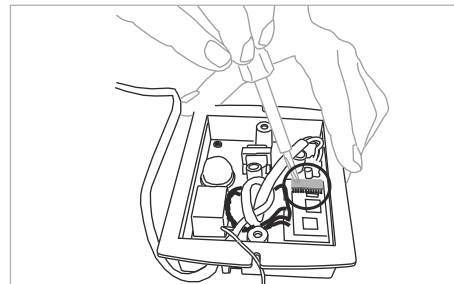
1. Identify the location to install detector. If LPG is to be detected, detector should be installed 30cm above the floor.



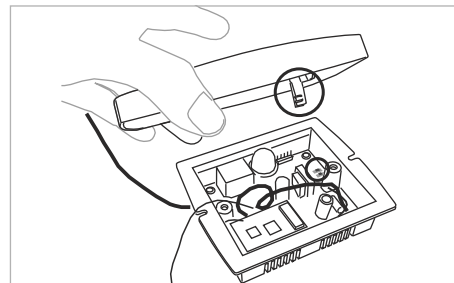
2. For Natural gas(LNG, PNG, CNG) detector should be installed 30cm below the ceiling.



3. Remove top cover of gas leak detector by unscrewing two screws fixed at the bottom side of detector.



4. Set the DIP switches as per instructions.



5. Hold the top cover over of the detector such that the light guide on the top cover matches with the LEDs on the detector board.

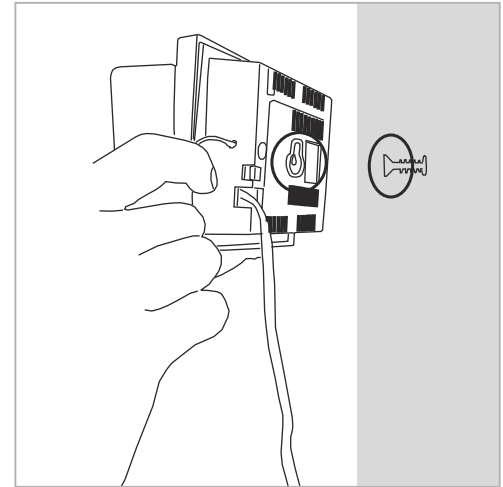
6. Fit the top cover, and fix the screws on the bottom of detector.

7. Power on the detector, by inserting cable in 230VAC, 50hz socket.

8. Detector warms up for first 2minutes 30seconds. During this time both Gas and Heat LEDs blink together.

On completion of warmup period, both LEDs start blinking alternately.

9. To test the detector, expose it to LPG gas. On detection of LPG, sensor's local buzzer gets activated and a buzzer indication is given.



10. Mount the unit on the wall at identified location with the help of rawl plugs and screws provided with the packaging.

### Important Information

1. Locations to be avoided for installing detector-

- Very close to exhaust fan
- By side of door or window
- In an enclosed space (e.g. inside cupboard),
- Directly above the gas
- Places where water can splash on the unit.

2. Check daily that detector ON LED is blinking. It is necessary to check the unit once in a month, by applying gas from test bottle.

3. Detector measures ambient temperature and when 60 degrees is exceeded, Heat LED turns on, buzzer is turned on and an indication is given on gateway unit.

### Troubleshooting

1) On detection of gas/heat the respective LED and local buzzer turns on, but no indication on gateway unit.

- Ensure that the DIP switches are set as per instructions

2) At power on, detector LEDs do not flash OR buzzer does not turn on when detector is activated by gas.

- Contact supplier