



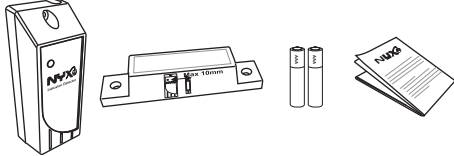
Installation Guide for Intrusion detector

Thank you for choosing Nyx Intrusion Detector.

This product is a wireless intrusion detector that identifies opening and closing of a door where it is installed and informs the gateway unit.

The Box Contains-

Intrusion Detector
Magnet Unit
Battery
Installation guide
Screw: 4 Nos.



Intrusion Detector Magnet Unit Battery Installation guide

Technical Specifications

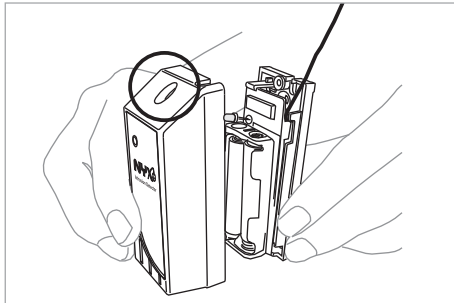
Operating voltage	3V (two AAA batteries)
Static current	1.5uA
Battery life	12 months
Intrusion Detect indication	LED flashes
Radio frequency	866Mhz
Radio operating distance	50m line of sight
Operating temperature	0 to +50°C
Humidity	<= 95%
Dimension	82X32X25 mm

Pre installation check list

- Avoid detector exposure to direct sunlight for prolonged hours.
- The distance between detector and magnet is less than 10mm when door is normally closed position

Product setup and configuration

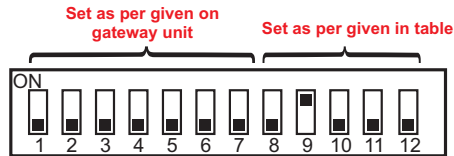
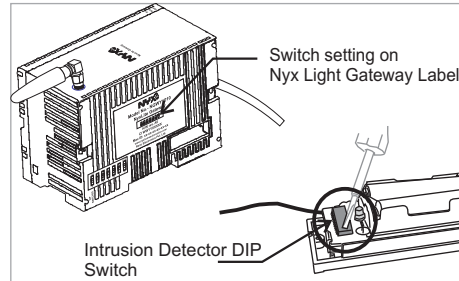
1. Open the top cover of detector by removing the screw on top case.



2. Set the DIP switches as per instructions below:

Note:
Make sure, while setting up the DIP switches battery should not be installed in the unit.

- a) There are total 12 DIP switches. First 7 DIP switches should be set as per the settings shown on your NyxLite Gateway module.



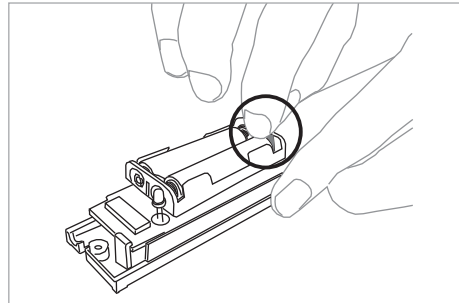
- b) The remaining 5 DIP switches (Switch 8 to 12) are meant for room location of the device. Choose the location and set the DIP switch setting as shown in below table:

Intrusion Detector	
Room Location	Node ID (DIP switch 8 to 12)
	8 9 10 11 12
Entrance Door	0 1 0 0 0
Terrace	1 1 0 0 0
Balcony	0 0 1 0 0
Dry balcony	1 0 1 0 0
Back door	0 1 1 0 0

How to set DIP switch to 1 or 0:

DIP Switch setting for position 0:	
DIP Switch setting for position 1:	

3. Insert the battery as shown in figure and close the top cover with screw.

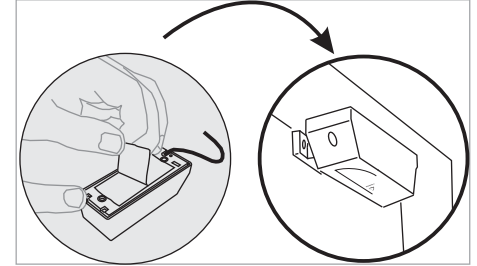


Installation

1. Mount the detector device to the chosen door frame

Remove the release paper from adhesive pasted on the bottom side of the detector case and paste it firmly on the door frame (or use screws).

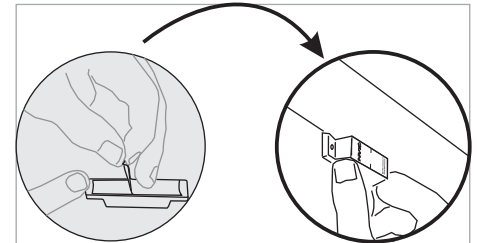
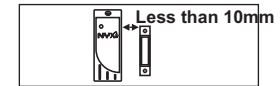
While doing this, take care that the surface should be clean [dust free & / or scratch free].



2. Mount the magnet unit to the same door panel

Note: Align the position of the door magnet and the distance between them should be less than 10mm as shown in figure:

Now, remove the release paper from adhesive pasted on the bottom side of the magnet unit and paste it firmly on the door frame (or use screws). While doing this, take care that the surface should be clean [dust free & / or scratch free].



3. Every time the door is opened or closed, the LED on detector will flash. This indicates the devices are placed properly.

4. Use mobile Nyx app to add this device to NyxLite Gateway.

Troubleshooting

- 1) Detector LED does not flash when magnet comes closer to detector device.
 - Ensure batteries are inserted properly.
 - Use new battery.