

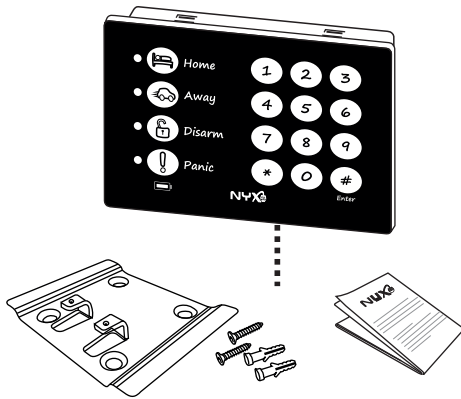


Installation Guide for RF Pinpad

Thank you for choosing Nyx RF Pinpad. This product is a wireless Pinpad that can be used to set different security modes.

The Box Contains- Pinpad

Mounting Plate
Rawl plugs and Screws
Installation guide

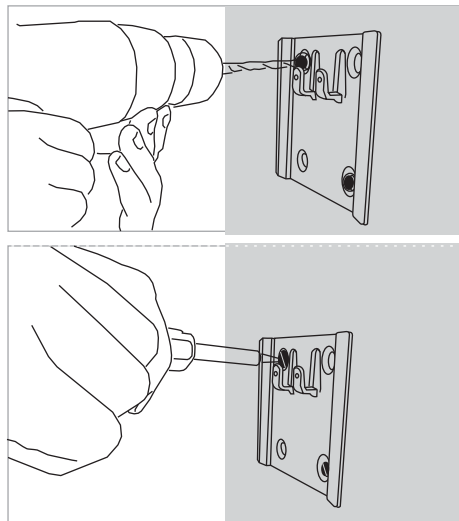


Technical Specifications

| | |
|---------------------------|--|
| Operating voltage | 230V, AC 50Hz |
| Standby Current | 32mA |
| Active Current | 62mA |
| Battery Backup | 10 hours |
| Battery status indication | Soild Green LED ON - Device is working on battery power Flashing Green LED - Low battery indication |
| Radio frequency | 866 MHZ |
| Radio operating distance | 50m line of sight |
| Operating temperature | 0°C to +50°C |
| Dimension (LXWXH) | 107 X 70 X 25 mm |

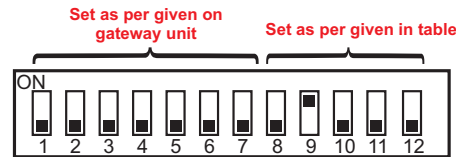
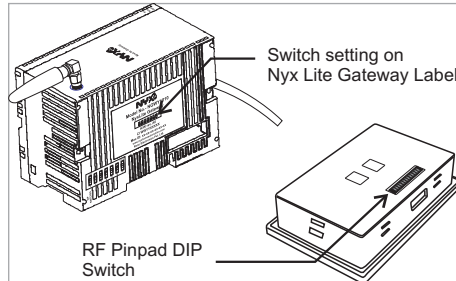
Product setup and configuration

1. The pinpad is mounted on the mounting plate provided in the Box. This mounting plate should be installed as shown in fig. Location of the device should be near to the power point.



2. Set the DIP switches as per instructions below:

a) There are total 12 DIP switches. First 7 DIP switches should be set as per the settings shown on your NyxLite Gateway module.



b) The remaining 5 DIP switches (Switch 8 to 12) are meant for room location of the device. Choose the location and set the DIP switch setting as shown in below table:

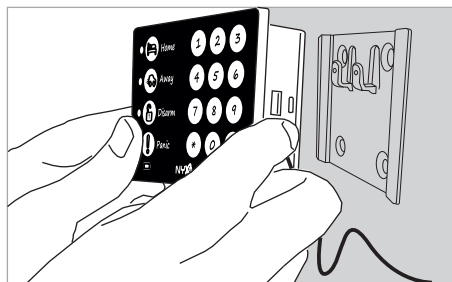
DIP switch configuration:

| RF Pinpad module | |
|------------------|--------------------------------|
| Room Location | Node ID (DIP switch 8 to 12) |
| | 8 9 10 11 12 |
| Pin Pad | 1 1 1 1 1 |

How to set DIP switch to 1 or 0:

| | |
|------------------------------------|--|
| DIP Switch setting for position 0: | |
| DIP Switch setting for position 1: | |

3. Mount the unit on the mounting plate. Power on the Unit , by inserting cable in 230VAC, 50Hz socket.



Pinpad Operations:



This product has 16 touch keys out of which 4 keys are assigned to predefined security modes, 10 keys are assigned to numeric keys from (0-9) and remaining 2 keys are assigned as function keys. This device communicates with Gateway on RF. After installation when the device is Turn-ON for first time, only white back light will glow. When any mode keys is press, respective RED LED will blink until numeric password is enter. If the entered password is correct, then selected mode will change and its RED LED light will remain ON. If entered password is wrong, then the desire mode will not change and blinking LED will Turn-OFF.

How to set mode?

1. Press any desire mode. For the selected mode, RED LED will blink.
2. Enter 4 digit password.
3. Press "Enter" Key (If password is correct, then the RED LED of selected mode will glow continuously, If password is wrong then it goes back to previous mode).

1. - On setting HOME mode with correct password, it immediately goes in to the HOME mode. In this mode after intrusion, it immediately gives continuous beep. The user needs to set "Disarm" mode and enter the password in user pre-defined time. If password is not entered within user pre-defined time then it will send alarm by email, SMS and buzz local hooter (if installed).
2. - On setting AWAY mode, with correct password it goes in to the AWAY mode after user pre-defined time. In this mode after intrusion, it gives continuous beep. The user needs to set "Disarm" mode and enter the password in user defined time. If password is not press within user defined time then it will send alarm by email, SMS and buzz local hooter (if installed).
3. - DISARM mode is use to de-activate HOME and AWAY security modes. In this mode motion and intrusion sensors are disable.
4. - This mode is set to indicate the emergency. In this mode the "Panic" alert will be send by email, SMS and Gateway buzzer, local hooter (if installed) will sound.

Important Information

1. Locations to be avoided for installing pinpad

- Places where water can splash on the unit
- Places where heavy dust accumulation occurs.

Troubleshooting

- 1) Unable to set desire security mode on pressing the key:
 - a) Only RED light blinks for few seconds and Turn-OFF.
 - > Ensure DIP switches are set correctly.
 - > Check NyxLite Gateway is Turn-ON.
 - > Check the device is added in the Nyx mobile application.
- 2) Buzzer and flashing of RED LED does not occur when key is pressed.
 - > Check power cord is connected.
 - > Contact supplier.