

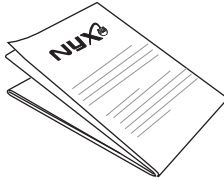


Installation Guide for RF Remote Control

Thank you for choosing Nyx RF Remote Control.

This product is a RF based Remote control used for controlling lights and fan.

The Box Contains- Remote control Installation Guide

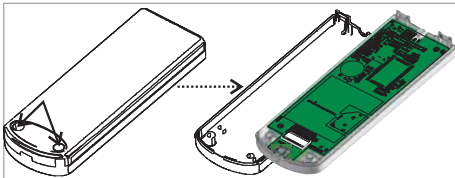


Technical Specifications

Operating voltage	5V DC
Standby Current	13 uA
Operating Current	62 mA
Battery Life	6 Months in standard condition
Radio frequency	866Mhz
Radio operating distance	50m line of sight
Operating temperature	0-50°C
Dimension (LXWXH)	49mm X 137.2mm X 16.6mm
Recommended charger (for-internal Battery)	Output - 5VDC at 500mA and above Pin type - USB 2.0 Micro B plug (male)

Product setup and configuration

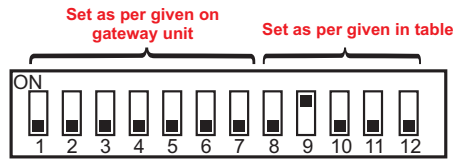
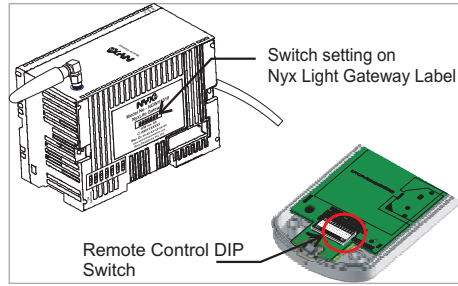
1. Open back case by unscrewing 2 screws. This will open up unit.



2. Set the DIP switches as per instructions below:

Note:
Make sure, DIP switches are set first and then batteries are inserted.

a) There are total 12 DIP switches. First 7 DIP switches should be set as per the settings shown on your NyxLite Gateway module.



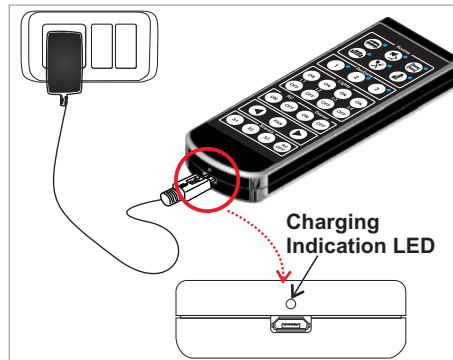
b) The remaining 5 DIP switches (Switch 8 to 12) are meant for room location of the device. Choose the location and set the DIP switch setting as shown in below table:

Remote	1	1	1	1	0
--------	---	---	---	---	---

How to set DIP switch to 1 or 0:

DIP Switch setting for position 0:	
DIP Switch setting for position 1:	

3. Insert the battery and close the top cover with screw.
4. Before first usage it is recommended to charge at least for 4 to 5 hours. The charging LED should glow indicating that battery charging has begun.



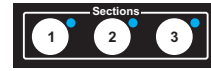
Remote Operations

This product has 27 keys which are divided into different groups for ease of operation.

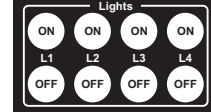
First group named as "ROOM", it has 6 keys dedicated for master bedroom, study, children bedroom, living, kitchen and guest room.



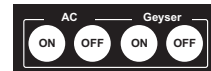
Second group named as "SECTIONS", it has 3 keys dedicated for 3 different switch boards. Before selecting the lights, section (switch board) must be selected.



Third group named as "LIGHTS", it has 8 keys meant for On and Off positions for four lights.



Fourth group is for Geyser and AC control; it has Four keys meant for ON and OFF. It is selected with Room Section



Fifth group named as "FAN", it has 3 keys for fan. The left keys reduces the speed and right keys increases the speed. A center buttons are for switching ON / OFF of fans. It is selected with Room & Section.



Sixth group named as "SCENES", it has 4 different scenes. S1, S2, S3 scenes can be define by user (using Nyx App). The fourth key is for all off lights and fans in selected room.



All key press are indicated by sound beep.

The remote goes in to the sleep mode, if no action for 10 seconds.

While remote is in sleep mode, by pressing any light or fan key, it will change the status of previously selected room.

All keys have fluorescent material that glows in dark.

Troubleshooting

- 1) On pressing any one key buzzer beeps and LED glows but no change in light load status.
 - Ensure that the DIP switches are set as per instructions.
- 2) Buzzer does not beep, LEDs does not glow when key is pressed
 - Ensure device is charged